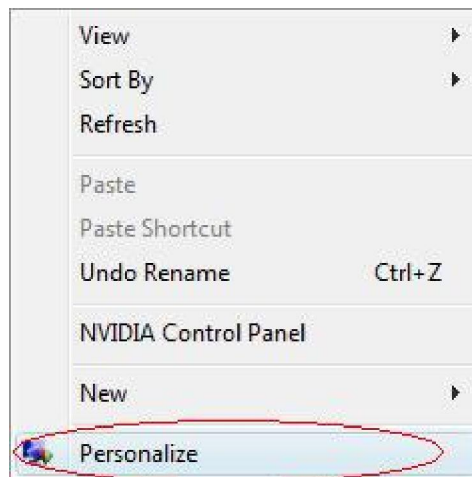


# Chapter 16 Frequently Asked Questions

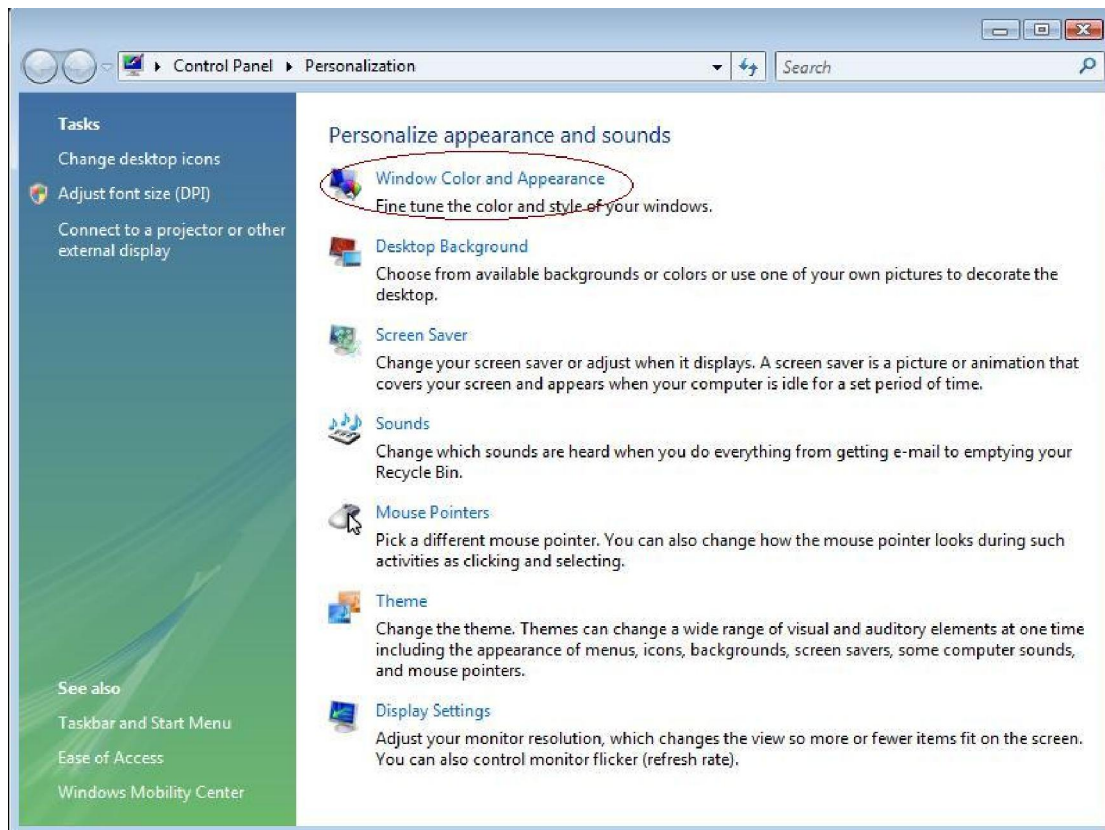
1、 Problem : Text display problems in vista system. For example, white text, but display not white text on LED screen.

Solution:

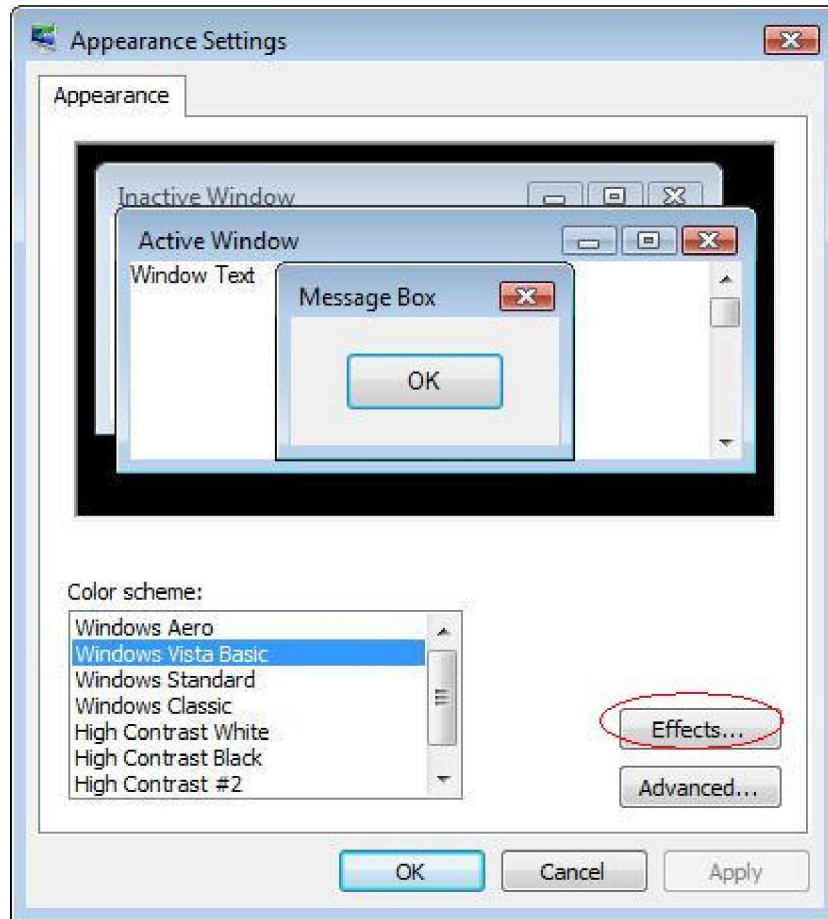
Step1. Right-click mouse on the desktop, then select “Personalize”.



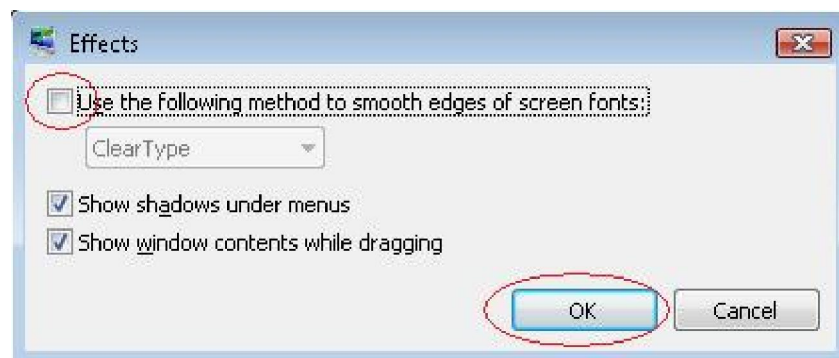
Step2. Click on “Window Color and Appearance”.



Step3. Click on “Effects” button.

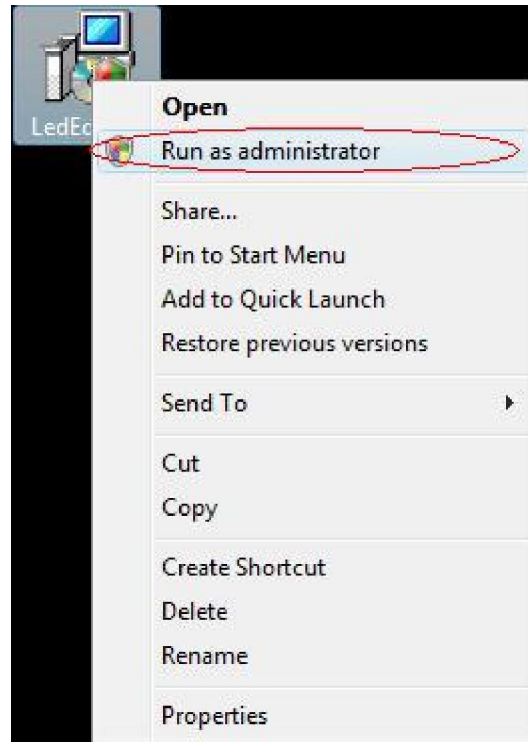


Step4. Cancel the option and then click on OK.



2、 Problem : Why can not install LED Editor soft in Vista system ?

Solution : Right-click mouse on the software icon then select "Run as administrator".



3、 Problem : Why two lines of 16 pixels font could not display in LED screen of 32 pixels height?

Solution: Using static text window to make program. **Note:** If it has frame, actual height of the window is 32 minus 2 times of the frame.

4、 Problem : Why you could not change program window size by moving mouse?

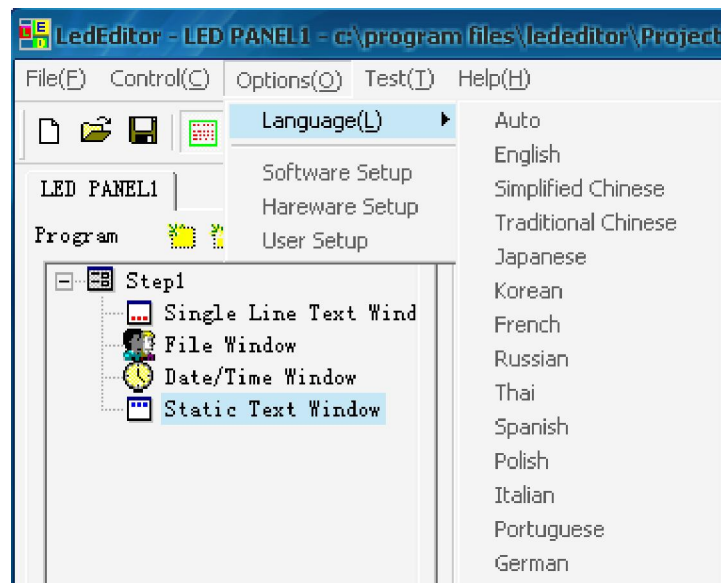
Solution: Check the window is locked or not. Unlock the window. Change size by moving mouse or inputting values (width and height).

5、 Problem : Why program preview effects are slightly inconsistent with program?

Solution: Display effects on LED screen should be taken as valid and binding.

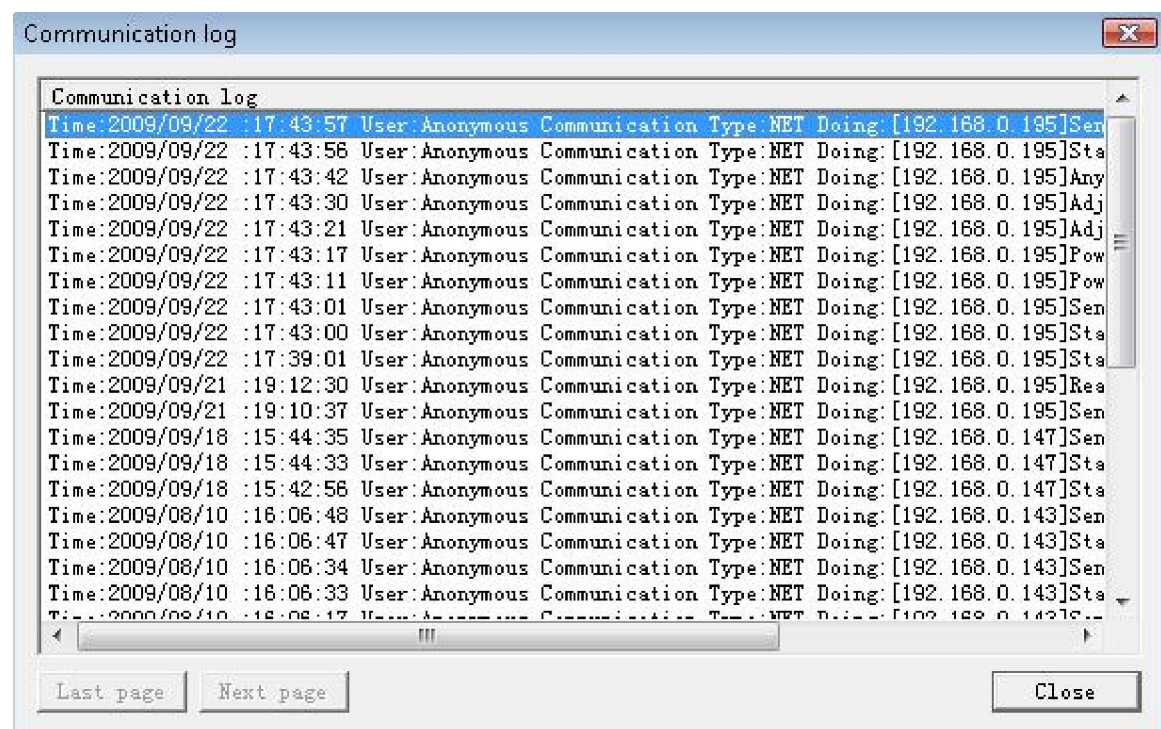
6、 Problem : How to revise LED Editor Language?

Solution: LED Editor Software can identify language according to OS of PC automatically. This software supports three kinds of languages: Simplified Chinese, Traditional Chinese and English.



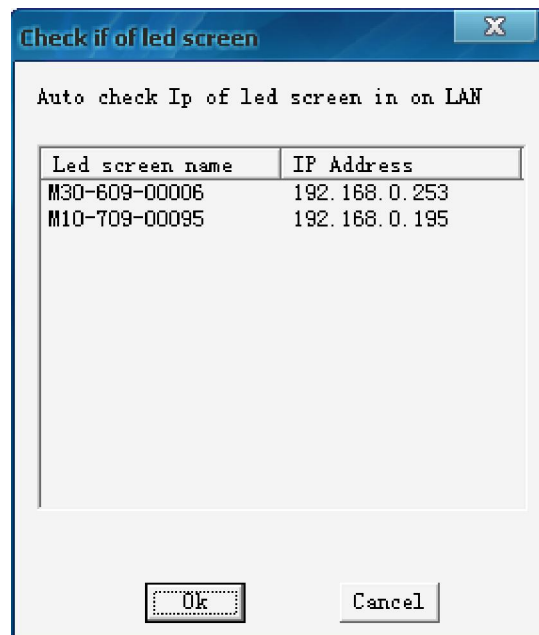
7、 Problem : How to view communication log about sending program and operating LED screen?

Solution: Click “Help” button on menu, select “LOG INFO”.



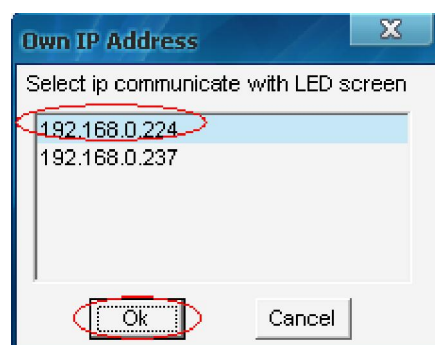
8、 Problem : How to check LED screen IP address automatically ?

Solution: Click “Help” button and select “Auto check LED screen IP”.



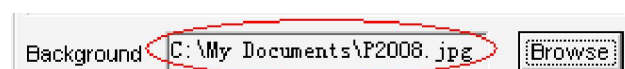
9、 Problem : How to select network card connecting LED screen, if there are multiple network cards in PC?

Solution: Click on “Help” menu and then select “Check Computer IP” to open IP Address selecting window. Select the network card that you want, click on “OK”.



10、 Problem : How to delete background picture ?

Solution: Need to delete all characters in edit box.



11、 Problem : To adjust position and size of program window:

Solution: Right-click on preview window, setting menu will appear, as shown in blow.



## 12. Communication type

**Wire:** Connecting controller with PC directly, but you need to assign an IP address manually. (Refer to Chapter 15 Communication Control)

Connecting controller with PC by LAN (you can use a router, also refer to Chapter 15 Communication Control)

Connecting controller with PC by WAN (Refer to Chapter 19 Internet Solution)

### Wireless

**Wireless RF:** user need to prepare RF modules then connecting RF modules with controller by serial port cable. Please select RF module communication in the LED editor: Menu bar→ Options→ Software Setup→ Communication Parameters→ Stand-alone mode→ RF



**Wireless GPRS :**User needs prepare GPRS module, we recommended H7210 GPRS DTU from Hongdian Technologies Corporation in Shenzhen and speed of GPRS will reach to 13Kbits/s

**Wireless 3G:** user needs prepare 3G Router, please refer to Chapter 24 Wireless 3G Communication Solutions.